

The world of sustainable laboratory equipment.



**Labexchange Group – father and son a strong team:**  
Dr. Wolfgang Kuster and Maximilian Kuster



[labexchange.com](http://labexchange.com)

The latest news of the leading provider of used and new laboratory devices. **Page 2-11**



[wolfgang-kuster-stiftung.com](http://wolfgang-kuster-stiftung.com)

The Labexchange Foundation supports charitable projects all over the world. **Page 8**



[labexchange-service.com](http://labexchange-service.com)

Qualified and independent service for all laboratory and analysis systems. **Page 12-13**



[labstribute.com](http://labstribute.com)

The expert for auctions of complete laboratories. **Page 15**

## Editorial

# The world of laboratory equipment

**Burladingen. For more than 33 years, Labexchange – Die Laborgerätebörse GmbH is a specialist for used laboratory equipment.**

We have led the field from the establishment of the market for second-hand laboratory and analysis equipment to the present day. This has been our joint achievement: with your help and in your interest, we have continuously developed the product programme, guarantees and service. Consequently, as a customer, you have the biggest possible selection of new and used laboratory and analysis equipment from all manufacturer's brands and all device types.

Unlike other dealers, we give you guarantees and warranties on each respective laboratory device. Labexchange is the only company that offers a maximum guarantee of one year and as well as an additional warranty of two years. Moreover, all this at prices which in some cases lie far below those on other portals. This reinforces our performance – to your advantage. Within the group, Labexchange - Die Laborgerätebörse GmbH sells second-hand and new laboratory equipment.

Over 10 years ago, the Labexchange Service GmbH was founded to underpin the quality of all devices we offer and our performance. This service company represents our commitment to qualified, technical service and completely risk-free purchasing of devices from Labexchange. This laboratory and analysis equipment comes with a service report documenting its operability and is ready for immediate use, or can be installed by Labexchange Service GmbH, on demand.

When it comes to buying devices, our range of services covers all options, to the advantage of the seller. We can buy the laboratory devices offered to us immediately or we can take them into storage at our own expense and in this case even

bear the transport costs for you. This "commission offer" achieves the true market value for the seller. Furthermore, for several years we have been able via our subsidiary, Labstribute GmbH, to handle the marketing of entire laboratories, including all fixtures and fittings, and auction them off at very short notice and without any great effort for the seller.

Labexchange is the only company in the second-hand laboratory equipment sector which is committed to sustainability, namely by the establishment of the non-profit Labexchange Foundation several years ago. The foundation supports many non-profit projects, also in the form of humanitarian efforts in the Third World, and presents an annual Labexchange Award to research projects run by school pupils and students in the fields of ecology and sustainability. Every customer who buys a laboratory device from Labexchange is directly supporting these projects and contributing to the sustainable use and increased added value of physical goods, since a fixed share of the annual turnover from the sale of laboratory and analysis equipment goes towards these projects.

Actions speak louder than words!

**Your Dr Wolfgang Kuster  
and the team of the Labexchange Group**

# Experience – Diversity – Thoroughness – Reliability This is Labexchange!

## Good reasons to be customer

### Huge selection

Discover around 6000 used and new devices of laboratory equipment and furniture in almost 150 product groups from over 800 different manufacturers. The biggest demand is for HPLC systems, gas chromatographs, GC-MS systems, laboratory hoods and centrifuges. Whether second-hand or new, request a non-binding offer suiting your needs.

## Award for Labexchange

Labexchange wins the German Brand Award and was named „Best Brand in Chemical Industry“. With the German Brand Award, Labexchange joins a list of renowned award winners such as Telekom, Lufthansa Systems, Porsche and Trumpf.



For the pick of the bunch of the German brand diversity

**A corporate brand such as Labexchange offers both the company and its customer's security, trust and orientation.**

The brand unites all parties involved, therefore creating a corporate unit. Labexchange's brand profile, its DNA, is made up of four brand values: experience, diversity, thoroughness, reliability. These values form the company identity and have been lived every day since 1989.

### Experience

From a small company in Swabian Burladingen to market leader – this is the story of Labexchange's success. Since 1989, Labexchange has built up a wealth of experience at national and international level, can call upon considerable technical expertise and is extremely competent when it comes to laboratory and analysis equipment. Labexchange has transferred its knowledge of the German market onto the international stage and was therefore the first company to internationalise the market. Since then, Labexchange has developed and had a considerable formative influence on the market. Labexchange can fall back on a wealth of experience, is continuing its learning process day by day and steadily building on this potential.

### Diversity

In order to satisfy the wishes of its customers, Labexchange offers a wide and diverse laboratory and analysis equipment portfolio. This includes, for example, general analytics through spectroscopy and chromatography down to laboratory furniture. This diversity is reflected in its huge selection of laboratory and analysis devices. Labexchange sells mainly used equipment, but also new devices from all manufacturers and price segments. Customers can hire or lease laboratory and analysis devices. Labexchange op-

erates entirely independently of specific manufacturers, thereby generating a broad product range and a high level of expertise. Its social commitment, too, is broadly based: Labexchange supports social projects in the Third World through donations of laboratory and analysis equipment. In addition, donations to local medical projects help to strengthen the region. This social commitment, especially in areas related to medicine, was anchored in a separate foundation: The Labexchange Foundation - Wolfgang Kuster Stiftung, which is sticking up for social and sustainable projects.

### Thoroughness

Labexchange's ultimate goal is customer satisfaction. A thorough approach plays a decisive role in this and means for Labexchange to always think one step ahead. This is practiced in the daily work at Labexchange. For example, Labexchange offers a complete all-round carefree package, from independent, needs-based advice, through precise analysis and customer-specific sales processing, to timely delivery or collection. The equipment is comprehensively tested and analyzed by qualified and certified technicians of Labexchange Service GmbH prior to sale and is thus in perfect technical condition.

### Reliability

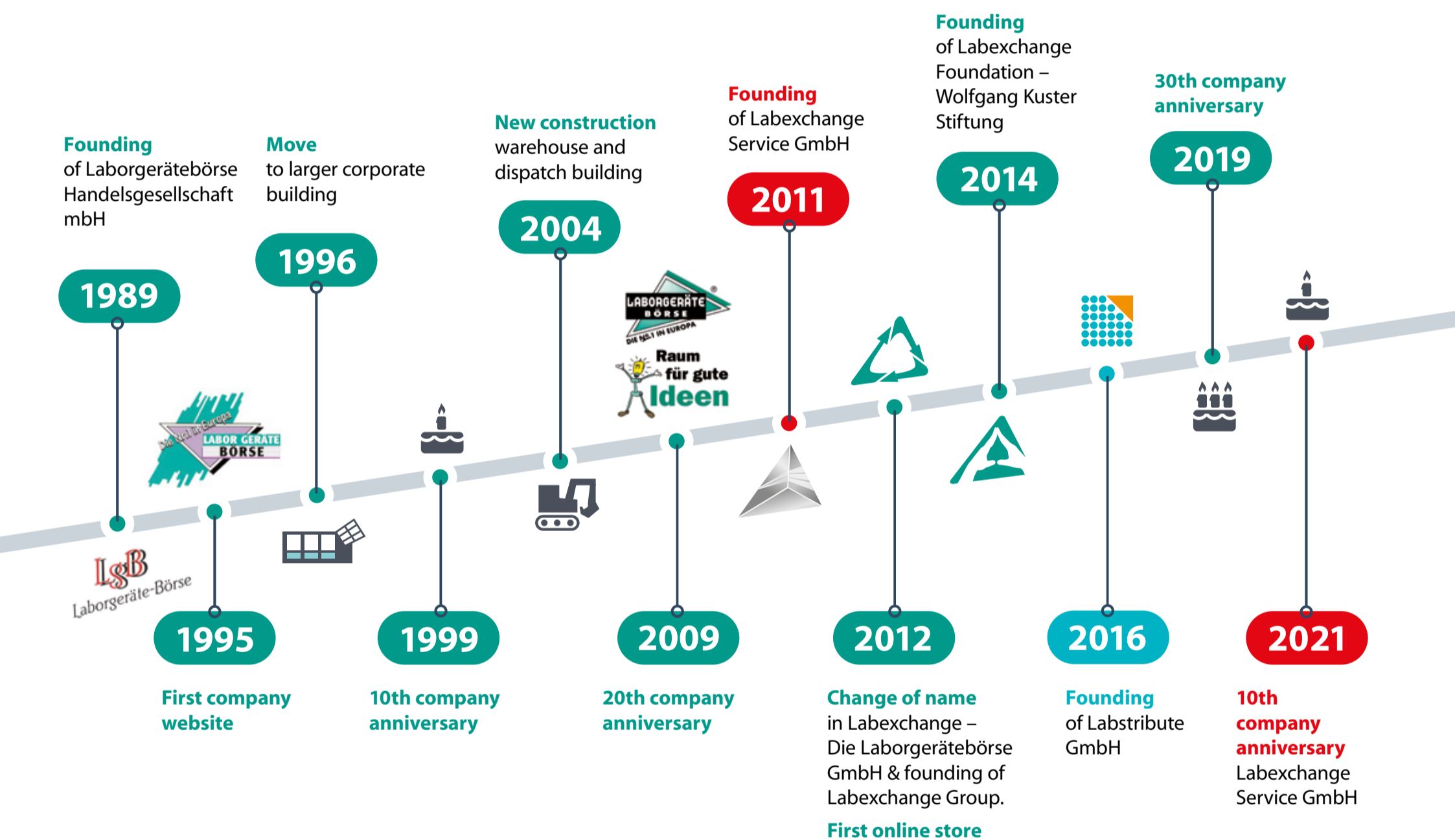
Labexchange is always on hand to help its customers with any questions or concerns they may have. Special customer wishes and requests are responded to with dedication and flexibility. Labexchange is pleased to be of assistance to its customers and offer its support in any way it can. The above-average safeguards and guarantees offered and realised by Labexchange are simply not to be found in the portfolios of its competitors. This, in addition, makes Labexchange a reliable partner.





10th company anniversary  
Labexchange Service GmbH

**Labexchange can look back on more than 30 years of company history. Concrete plans for the future are waiting in the wings!**



2019: 30th company anniversary of Labexchange – Die Laborgerätebörse GmbH ceremonial act and speech by District Administrator Günther-Martin Pauli

# In conversation with our customers

”Despite the constant expansion of the online offer, we would also like to be more present at trade fairs again in the future. The personal exchange with our customers from all over the world motivates us to continue performing very well so that we can continue to be the top dog among used laboratory equipment in the future.“

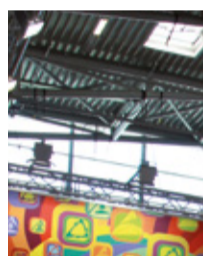
**Dr. Wolfgang Kuster**  
Managing Director

The personal contact with our customers and sales prospects for used and new laboratory equipment is very important to us. Due to the corona pandemic of the last few years, these personal discussions were not possible at all, or only digitally, either at trade fairs or at other customary events in the industry. So we have actively used this time as an opportunity to expand our online offering:

- Optimized online shop
- Digital product catalogs
- Improved newsletter content
- Online events



Bienvenue à Paris – Forum  
LABO & BIOTECH, Paris – FR



Interested visitors  
at the analytica 2018,  
Shanghai – CHINA



The visitors were enthusiastic:  
analytica 2018, Munich – GERMANY



A complete success:  
analytica 2016, Munich – GERMANY



Labexchange international  
– Arablab 2017, Dubai – AE

# Laboratory devices and analysis systems order around the clock

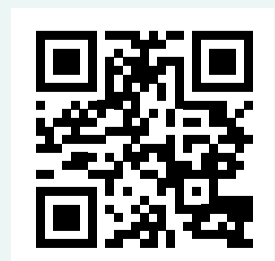
In the online shop of Labexchange - Die Laborgerätebörse GmbH you will find over 6,000 laboratory devices and analysis systems, both in new and used condition. Used equipment is professionally inspected by Labexchange Service GmbH and of course comes with a warranty! This is what the entire Labexchange Group stands for: Laboratory equipment and analysis systems in tested quality at fair prices. This principle is also reflected in our online shop at [shop.labexchange.com](https://shop.labexchange.com): "In today's world, as a globally active company, we always want to be available for our customers. In our online shop, interested customers can find the right device and order directly and conveniently - independent of time and place, in five different languages, and with the appropriate payment option," highlights Dr. Wolfgang Kuster. He and his son Maximilian Kuster place particular emphasis on the digital offering. "The digital world is the future. To achieve this, we have to constantly develop ourselves and our range of products," says Maximilian Kuster, registered manager and head of sales.

The online shop offers numerous search and filter options so that suitable devices can be found quickly and easily. Since the end of 2021, Labexchange has also offered leasing as an additional payment method alongside credit cards. Furthermore, interested customers can create unlimited online offers and have them sent to them. This way, an offer can be stored in the customer account and retrieved later at any time. The intuitive management of the customer account and an extensive search function reflect the progress towards e-commerce. In the future, Labexchange's online shop will provide many more useful features: a comparison function, order status viewing and retrieval, and automated notifications for individual customer requests.



Visit our online shop now  
**[Shop.labexchange.com](https://shop.labexchange.com)**

Scan  
the QR code:



# Climate neutral company

## Labexchange is now climate neutral



**Through the cooperation with the company Fokus Zukunft, Labexchange - Die Laborgerätebörse GmbH was certified as a climate neutral company in March 2022.**

### Climate neutral company since 2022

Sustainability certification highlights the company's holistic business approach.

Since the foundation of Labexchange - Die Laborgerätebörse GmbH in 1989, we have placed a sustainable and long-term usage of laboratory devices and equipment at the very core of our entrepreneurial concept. Competent and professional repair services enable our customers to employ the devices for many more years to come. Since March this year, the sustainability aspect has been enhanced further: We have been certified as a climate neutral company.

After thoroughly investigating and verifying the carbon dioxide consumption within all the relevant corporate divisions of our company, the environmental consulting firm Fokus Zukunft was able to determine a total of 307 tonnes of greenhouse gas emissions. "We have only now become aware of the precise dimensions of our CO2 consumption thanks to this accurate analysis of our operations. Repairing second-hand laboratory devices in order to return them to the economic cycle has always been our contribution to sustainability. We are truly happy about having been officially granted the climate neutral label now, which was made possible by the acquisition of climate protection certificates," says Dr. Wolfgang Kuster, Chief Executive Officer of Labexchange - Die Laborgerätebörse GmbH.

By purchasing 307 high-quality climate protection certificates, Labexchange takes another step towards acting responsibly and, by doing so, committing itself to the well-being of future generations. By means of these newly-purchased certificates, Labexchange supports a hydroelectric power plant in Turkey as well as a biomass project in Vietnam. As far as climate protection goes, however, it is also the regional woodlands here in Germany that play an essential role for Labexchange. For this reason, the Labexchange staff are going to plant trees at the corporate summer party in order to contribute their share to sustainability within the region where the company itself is based, helping the latter to go even more climate positive.

Dr. Kuster is determined to identify additional cost-saving opportunities in the future in order to further reduce the company's carbon footprint. Some initial measures have already been put into practice, such as offering job bikes to cut the employees' fuel consumption or switching to the use of 100% recycled paper bearing the EU Ecolabel. In mid-2022, an environmental management system based on the ISO 14001 standard will be implemented.





# Environmental management system ISO 14001 Certification

**In combination with the already existing ISO 9001 quality management, Labexchange is currently integrating an environmental management system according to ISO 14001.**

Since the introduction of a quality management system in 2005, Labexchange has been consistently and successfully certified according to the DIN EN ISO 9001:2015 standard. Complementing the Labexchange sustainability philosophy, an environmental management system according to the DIN EN ISO 14001:2015 standard is currently being integrated. Preparations for the first TÜV audit are going full speed. The aim is to ensure conformity with the standard, define binding environmental obligations and check their compliance and effectiveness. The first certification by TÜV Süd should then take place in July. Labexchange understands this additional qualification not

simply as a marketing argument, but as a commitment to quality and environmental protection in daily processes and in the use of resources. Sustainable management, economical use of resources and protection of the environment are, so to speak, „in the cradle“ of the company, if one considers the value added when reusing used equipment. In times of scarce raw materials and inherent supply chains, the reuse of existing resources is gaining in attractiveness and forms a reliable alternative. Labexchange goes even further when it comes to climate protection. The company is climate neutral since 2022. By purchasing climate certificates, the calculated greenhouse gas emissions of 307 tons are compensated.

Ecology and sustainability have always been topic number 1 for Labexchange, which is now substantiated by the achievement of climate neutrality and the introduction of environmental management.



## Social commitment:

# Labexchange Foundation Wolfgang Kuster Stiftung

Labexchange®  
Foundation

Wolfgang Kuster  
Stiftung



”There is nothing good  
unless you do it.“

Erich Kästner

The words of Erich Kästner’s poem “Moral” epitomises the foundation’s stated aim. The aphorism illustrates that only a person’s actions can demonstrate whether he or she is good or not.

### Labexchange says THANK YOU for customers’ project support!

We would like to express our thanks to our customers for their commitment. By purchasing a second-hand device, our customers are supporting the principle of sustainability. The extended use of tested laboratory equipment contributes to increased added value and a more favourable life cycle assessment. We multiply this commitment by donating part of the purchase price to the Labexchange Foundation, which uses this donation for the common good by fostering ecological development and sustainability.

### The establishment of the foundation

If you ask Dr. Kuster what his intention was to set up a foundation, then on the one hand he expresses gratitude for the success he has experienced, on the other hand, he wants to set an example for future generations. In the same breath, he mentions letting his own name live on. There is no simple or universal answer. Above all, the establishment of a foundation is a sign of the seriousness and credibility of an intention in combination with the assumption of social responsibility. Subsidies are used in a targeted manner. As a result, projects can be funded much more sustainably.

### Objectives of the Labexchange Foundation

The Labexchange Foundation – Wolfgang Kuster Stiftung is based on Labexchange – Die Laborgerätebörse GmbH charitable foundation, which is particularly the promotion of the following priorities:

- healthcare sector
- art and culture
- environmental protection
- welfare system
- collaboration on development
- common welfare and projects as well as organisations which care for people in poor countries.

Support can take the form of both, financial resources and the provision of equipment for medical, clinical chemistry or analytical purposes free of charge. The foundation regularly presents the Labexchange Award to charitable projects in the listed sectors. This award dignifies the initiative of young people who are engaged in the field of chemical analysis.

### Donation handed over to child-cancer-aid association “Förderverein für krebskranke Kinder Tübingen e.V.”

Merle Klaiber, speaker of the association’s board of directors, approached the Labexchange Foundation in April this year to solicit support. An essential research device employed for the production of killer cells within the framework of leukaemia treatment at the paediatric hospital in Tübingen had broken down. One of the fields the association is very active in is the sector of cancer research, trying to find improved therapies for children suffering from cancer.

A highly complex inverted fluorescence phase contrast microscope for tissue culture applications was needed, a device that enables its users to identify fluorescent cells and compile an illustrated documentation of the cell populations by means of an adapted camera. Consequently, a microscope to the value of € 20,000 featuring the appropriate properties could be procured in order to be then handed over to the Tübingen-based development association.

On behalf of the Labexchange Foundation, managing direc-



tor Dr. Wolfgang Kuster and Maximilian Kuster have now been able to present the research microscope in person to Anton Hofmann, chairman of the board.

“We are extremely happy about having been provided with this urgently needed microscope free of charge and at such short notice by the Labexchange Foundation,” said chairman of the board Anton Hofmann after having been handed over the device.



### Support for a hospital in Gambia - Africa

Labexchange supports for the second time in cooperation with Dr. Antonie Bäuerle from Frickenhausen a container shipment to Africa with a donation of equipment. It was a hematology device, which is an irreplaceable instrument in clinical-hematological diagnostics. With the help of this laboratory device, clinical pictures can be recognized and appropriate forms of treatment can be derived for the patient. The hematological status of a blood sample can be evaluated automatically, including the number and distribution of the various blood cells and the hemoglobin content. The volunteer team from Dr. Bäuerle received active support from Gambian refugees.



# Always up to date with the Labexchange Newsletter

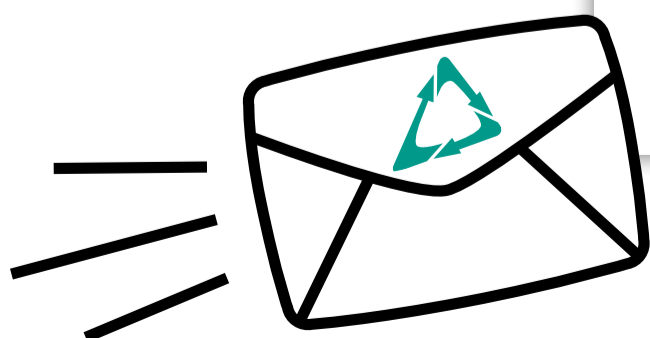
Would you like to be informed about current new devices and special offers? That's no problem with the Labexchange newsletter.

Sign up at [labexchange.com](http://labexchange.com) and get 3% off your first order.

Once a month we will send you the Labexchange newsletter to your preferred email address. Look forward to the following topics:

- Be the first to find out about great discounts and special offers for used and new laboratory equipment and analysis systems.
- We also present the TOP products to you every month. You can easily find the products with a sensational price-performance ratio and unique purchase opportunities.
- Should Labexchange -Die Laborgerätebörse GmbH change something, you are informed about it at the very beginning.

Scan the QR code now and you will go directly to the registration form:



Laboratory- and analysis systems. [read newsletter online](#)  
As new. With guarantee.

---

**Labexchange**  
The World's No.1

Contact

Laboratory and analysis | Spectroscopy | Chromatography | Laboratory equipment | Life science

**Spring has arrived, bringing along a host of special offers for you:** Start furnishing your laboratory with used laboratory devices and analysis systems now. As a matter of course, all the devices available have been approved and tested. They come also with a guarantee. In mint condition and as good as new.

This month, we are also offering you high-quality **HPLC systems** selected from our **chromatography category**.

Best regards

Your Labexchange team

Current topics

- > Hello spring! Hello special offers!
- > High-quality HPLC systems
- > Dr. Kuster speaks at conference
- > Trade fair dates
- > Your contact at Labexchange

---

**Hello spring! Hello special offers!**  
A great number of second-hand equipment and devices available for your laboratory

**Start this year's spring season with a perfectly equipped laboratory!**

Visit our online shop and find all the available laboratory devices that come with a guarantee.

Discover our spring offers now >

**Sign up now and never miss another buying opportunity!**



## Dr. Wolfgang Kuster is a senior member of the BDSF (Bundesverband Deutscher Sachverständiger und Fachgutachter BDSF e.V.)

Dr. Wolfgang Kuster, managing director of the Labexchange - Die Laborgerätebörse GmbH, is a senior member of the German Federal Association of Experts and Technical Consultants ("Bundesverband Deutscher Sachverständiger und Fachgutachter e.V."); in his capacity as a technical specialist, he will be pleased to provide you with his expert knowledge when it comes to assessing, evaluating and determining true market values at auctions.



As a registered expert in the field of evaluation of laboratory and analysis systems, Dr. Wolfgang Kuster with more than 33 years of professional experience is a competent contact person for everything to do with laboratory equipment and analysis systems in the field of laboratory, chemistry and analysis. Through global contacts, Labexchange can also acquire devices that specifically cover your needs.

Labexchange – Die Laborgerätebörse GmbH  
Vertrieb von gebrauchten Laborgeräten

Labexchange - Die Laborgerätebörse GmbH ist der weltweite Marktführer für den An- und Verkauf von gebrauchten Laborgeräten und Analysesystemen mit Garantie.

**Contact information**  
Labexchange – Die Laborgerätebörse GmbH  
Bruckstraße 58  
72393 Burladingen  
Germany  
Directions

**Contact person**  
Kundenservice

+49 (0) 7475 951419  
+49 (0) 7475 951444  
info@labexchange.com  
Arrange an appointment  
Legal notice

**Images & Videos**

**Opening hours**  
Sunday CLOSED  
Display all times

**Websites & Profiles**  
Labexchange Onlineshop  
Unternehmen Website

Review from 03/25/2022  
4.76 out of 5  
EXCELLENT  
Recommendation

Quality	★★★★★	4.50
Value	★★★★★	4.75
Services	★★★★★	4.88
Realization	★★★★★	4.67
Consulting	★★★★★	5.00

# Rating platform for customer feedback Labexchange – The Laborgerätebörse GmbH now at Proven Expert

In order to be able to constantly improve product and service quality, Labexchange – Die Laborgerätebörse GmbH is now listed on provenexpert.com.

Labexchange – Die Laborgerätebörse GmbH takes customer feedback seriously. That’s why Labexchange has recently been listed on Proven Expert, so that customers can give their feedback here. Of course, we are always happy about

the positive customer comments. However, Labexchange also sees the negative comments as an opportunity to discover potential for improvement and implement it as quickly as possible.

“Feedback from our customers is extremely important to us. As a medium-sized company in the south of Germany, we want to position ourselves well worldwide and permanently, so that a relationship of trust can develop with our customers right from the start. This is why we have chosen Proven Expert and we are looking forward to further valuable customer feedback. This is the only way we can improve in terms of service and product quality.”

**Karin Baur**  
Representative Quality Management





We are flexible and dynamic for you  
in our modern service rooms.

Service specialist  
for maintenance  
& installation

### Friendly and competent advisory service

At Labexchange you'll find a team of expert chemists, chemical engineers, industrial engineers and a commercial staff, all ready to help.

Labexchange is an experienced partner when it comes to equipment configuration, application as well as purchasing and selling of devices.



# Service for all laboratory and analysis systems

## Qualified. Manufacturer-independent.

**Qualified laboratory equipment service means not only the primary repair of laboratory and analysis systems, but also providing a maximum of support in handling this sensitive equipment. The combination of qualified support and independent service is the utmost concern of Labexchange Service GmbH.**

The concept behind Labexchange Service GmbH is to be the independent, cost-effective and qualified partner for maintenance, repair and safety testing in the laboratory. With experienced service technicians and a large number of cooperating service companies, we offer our customers individual solutions for their needs.

### Expert service for laboratory equipment of all manufacturers and all years of construction

Specialized technicians also take care of the installation, maintenance, repair, PC software connection or the relocation of gas chromatographs, HPLC systems, MS couplings or laboratory technology of all type. Each configuration can be repaired or maintained either in the company's own service laboratories or on site at the customer's premises. Customers benefit from the extended life of the laboratory equipment and can exchange information with experienced service technicians.

### Recurrent inspections for safety in your laboratory

Many laboratory devices and equipment must be checked annually for operational safety. As a manufacturer-independent service company, Labexchange Service GmbH

inspects your equipment according to current regulations and standards, regardless of make or age. The technicians are certified and trained and have several years of experience with relevant equipment. In addition, only calibrated test equipment is used as part of the ISO 9001 certification. All work is clearly documented in test reports and provided in digital or analogue form. You can find the entire range of testing services in detail on our homepage or simply ask directly for an individual offer tailored to your needs.

### Safe working through certified maintenance of safety cabinets

Certified and trained service technicians test all microbiological safety cabinets and cytostatic workbenches according to legally prescribed standards. Regular maintenance of your workbenches protects you and your employees in their daily use. In addition to periodic inspections, we perform repairs and filter changes on your workbenches.

### Over 10 years of experience for your satisfaction

Last year, Labexchange Service GmbH celebrated its 10th anniversary. However, the roots of the company go back further, to the spin-off of Labexchange's - Die Laborgerätebörse GmbH service department. This experience is a guarantee for smooth testing of your equipment.

Challenge us - we will be pleased to prepare a tailor-made offer for you.


**Labexchange Service as the number 1 contact for testing and repairs**

Our goal is to offer our customers an individual range of services related to their equipment testing and to solve their problems according to their wishes. Our claim is to actually test and repair equipment according to their needs. This allows us to offer a significant price advantage. In addition, we strive to be able to serve all manufacturers and devices. Thus, the customer is more flexible with us and has a single contact for all interests.

Our service technicians are experienced hardware and electronics specialists with several years of experience in the field of laboratory equipment and laboratory facilities. Regular training keeps our service technicians up to date and allows them to continuously expand their knowledge. We take care of your laboratory in an independent and uncomplicated way. Thus, we keep your back free so that you can concentrate on your daily work.


**Our range of services at a glance  
– Service at the highest level**

**Laboratory devices**




- **Refrigerators and freezers, heating and drying cabinets**  
Scope of testing: Testing according to DGUV 3, §4 ArbStättV., testing, documentation and installation, testing of function and use, incl. protocol and test badge
  - **HPLC systems**
  - **Gas chromatographs**
  - **GC/MS, LC/MS couplings**
  - **Laboratory Technology**
- As a brand-independent partner, it is our top priority to solve every service case according to your wishes. Our service specialists can perform all required mechanical, optical and electronic work. Quality and satisfaction is our motivation.

**Laboratory equipment**




- **Laboratory fume hoods**  
Scope of testing: Testing according to DIN EN 14175 Part IV, incl. protocol and test badge
  - **Safety cabinets**  
Scope of testing: Testing according to DIN EN 14175 Part IV, incl. protocol and test badge
  - **Laboratory furniture**
  - **Laboratory sinks**
  - **Workstations**
- From fume cupboards to double workstations, normal work surfaces, safety cabinets and sink units, with us you have found the competent partner for your laboratory equipment.

**Safety cabinets**



We help you to create an optimal environment for safe work in the laboratory. We test your **safety cabinets** according to the following standards: Function and safety test, air velocity measurement DIN EN 12469, downflow rate and inlet velocity, electrical test according to DGUV 3, Testing of filter integrity and seal fit by scan test with particle counter, Measurement of noise level and light intensity, Flow visualization and Testing of the flow direction, Testing of environmental conditions and labelling, incl. protocol and test badge.

**Centrifuges**



We carry out centrifuge inspections on site, testing your **centrifuges** both in operating condition and in disassembled condition. Scope of testing: Testing according to DGUV regulation 100-500 in disassembled condition or operating condition, Function and safety check, Electrical test according to DGUV 3, incl. protocol and inspection sticker

Take advantage of our short response times and our competent and manufacturer-independent service! With us the service becomes simple, fast and cost-effective.



Have you already thought about the annual safety checks of your laboratory equipment? You can find all current offers on our homepage: [www.labexchange-service.com](http://www.labexchange-service.com)



Subscribe to our newsletter now and never miss any more offers!

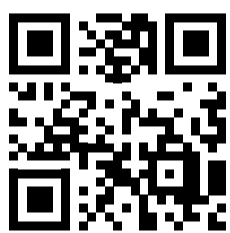


# Efficient sale of laboratory devices and equipment

## Simple and free disposal of your laboratory equipment

Do you have equipment that you no longer need or are you dissolving a laboratory site? Then Labexchange is the right partner for you.

Labexchange takes care of the marketing and collection, free of charge. Due to the fact that we are known as the market leader, we reach more than 100,000 prospective buyers worldwide.



**What is no longer of value to one person due to changed conditions is exactly what another person needs at that moment.**

Labexchange's versatile range of offers is the result of numerous suppliers, such as institutions, companies, laboratories or private individuals, who sell no longer needed laboratory equipment via Labexchange. They trust in the knowledge, competence and experience of dealing with used laboratory and analysis systems. Labexchange takes over individual laboratory devices or entire laboratories.

### The supplier in the foreground

Labexchange offers with the web page a demand-oriented framework for suppliers, in which they can offer no longer needed laboratory equipment and laboratory furniture as simply, quickly and purposefully as possible. The website puts the supplier in the foreground and focuses on his core need to sell his laboratory equipment efficiently.

### Only 4 steps to the sale

A short form is used to send the key data of the laboratory equipment to be sold to Labexchange. Experts then determine the market value free of charge. In the third step, the

supplier receives a non-binding offer, in which the possible sales options and the respective market value are stated. Basically, the vendor can choose between different sale options, such as immediate sale, announcement or auction. The priorities of the offerer are taken into account. No matter whether the amount of the sales price has priority or whether a quick removal of the laboratory inventory is desired. Finally, the laboratory equipment is sold. Labexchange takes over the complete sales process. The vendor receives the agreed market value.

### Over 100,000 potential buyers are reached

The professional marketing and collection of the equipment is free of charge for the provider. Labexchange operates worldwide and receives numerous requests for equipment on a daily basis. All laboratory equipment and furniture is marketed in the Labexchange online store and through various sales channels. Regular mailings to an international and personalized address database reach more than 100,000 potential buyers working in analytical chemistry.

[labexchange.com/en/](https://labexchange.com/en/)

# Laboratory closure? Let us handle this!

## Profitable, fast and straightforward.

**Labstribute is the specialist for market value calculation and auctions in the field of laboratories and process plants. The newest member of the Labexchange Group auctions complete laboratories, including all components, at very short notice, requiring little effort on the part of the seller in the process. Labstribute takes care of the marketing of the auction.**

The auction of laboratory inventory, a complete laboratory or process plants is only possible with the help of the relevant specialists. An expert market value assessment is the basis for a successful and profitable laboratory auction. Our experts value your laboratory devices, pharmaceutical and process equipment accurately and they have the right technical expertise.

Labstribute's services range from the detailed creation of an inventory and a catalogue of the laboratory inventory, process plants and machines through qualified market value calculation down to the perfect auction service via our online platform Labstribute.com. Further services, such as

private inspections and the complete monitoring and supervision of the extraction of the laboratory, complete Labstribute's service portfolio. There is even a unique packaging and delivery service for laboratory fixtures and fittings. Laboratory users and manufacturers in the pharmaceutical and chemical sectors get their money's worth on the [Online auctions platform Labstribute.com](https://www.labstribute.com).

This is where interesting laboratory and process technology auctions take place. All relevant data relating to the auctions, full auction catalogues, photographs and important information on the respective items can be viewed online. This enables registered auction participants to obtain all the information they need to make a bid on Labstribute.com. With just a few clicks, interested parties can register and immediately auction goods.

*„An expert market value assessment is the basis for a successful and profitable auction. Both buyers and sellers can rely on our know-how.“*

**Michael Rempp**  
Chief Operating Officer



# Labexchange Group

# – all-round concept!



## Labexchange - Die Laborgerätebörse GmbH

Bruckstr. 58  
72393 Burladingen  
+49 (0)7475-9514-0  
info@labexchange.com  
shop.labexchange.com

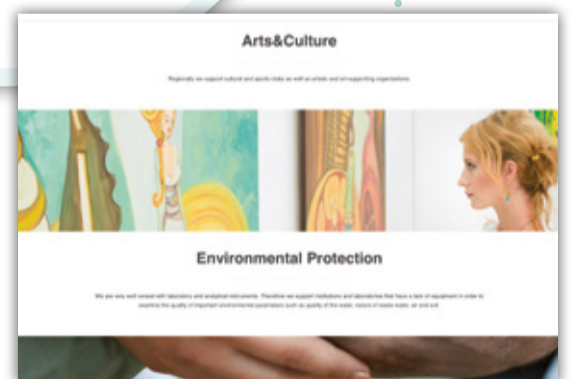
**Labexchange Service GmbH**  
Bruckstr. 58 · 72393 Burladingen  
+49 (0)7475-9514-0  
info@labexchange-service.com  
www.labexchange-service.com



**Labstribute GmbH**  
**Labor-Auktionen**  
Wartburgplatz 6  
80804 München  
+49 (0) 89-32155955  
info@labstribute.com  
www.labstribute.com



**Labexchange Foundation  
– Wolfgang Kuster Stiftung**  
Bruckstr. 58 · 72393 Burladingen  
+49 (0) 7475-9514-0  
info@labexchange-foundation.org  
www.wolfgang-kuster-stiftung.de



**Publisher**  
Labexchange – Die Laborgerätebörse GmbH

Bruckstraße 58 · 72393 Burladingen-Hausen  
Phone +49 7475 9514-0 · Fax +49 7475 9514-44  
info@labexchange.com · www.labexchange.com

**Editing:** Labexchange Group  
**Layout:** www.bastian-grafik.de

Part of the Labexchange Group

